

Elegant Keypad

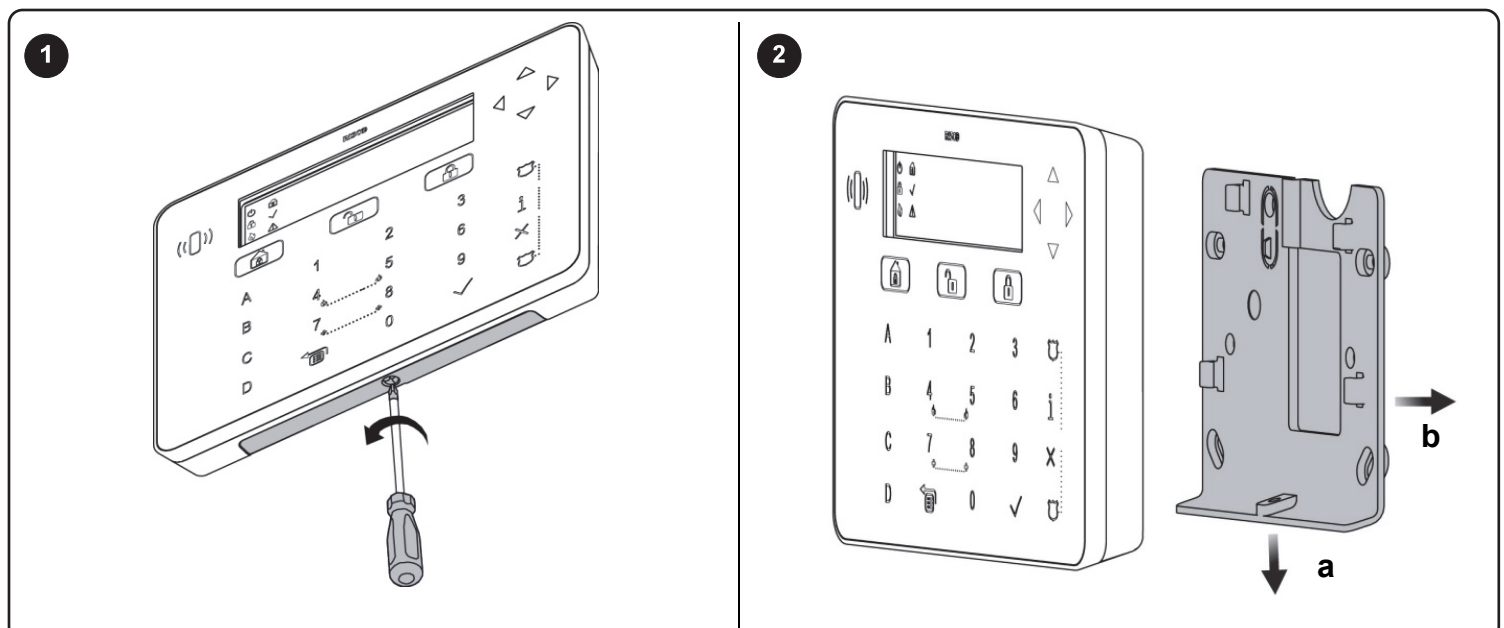
Models: RPKELP, RPKEL

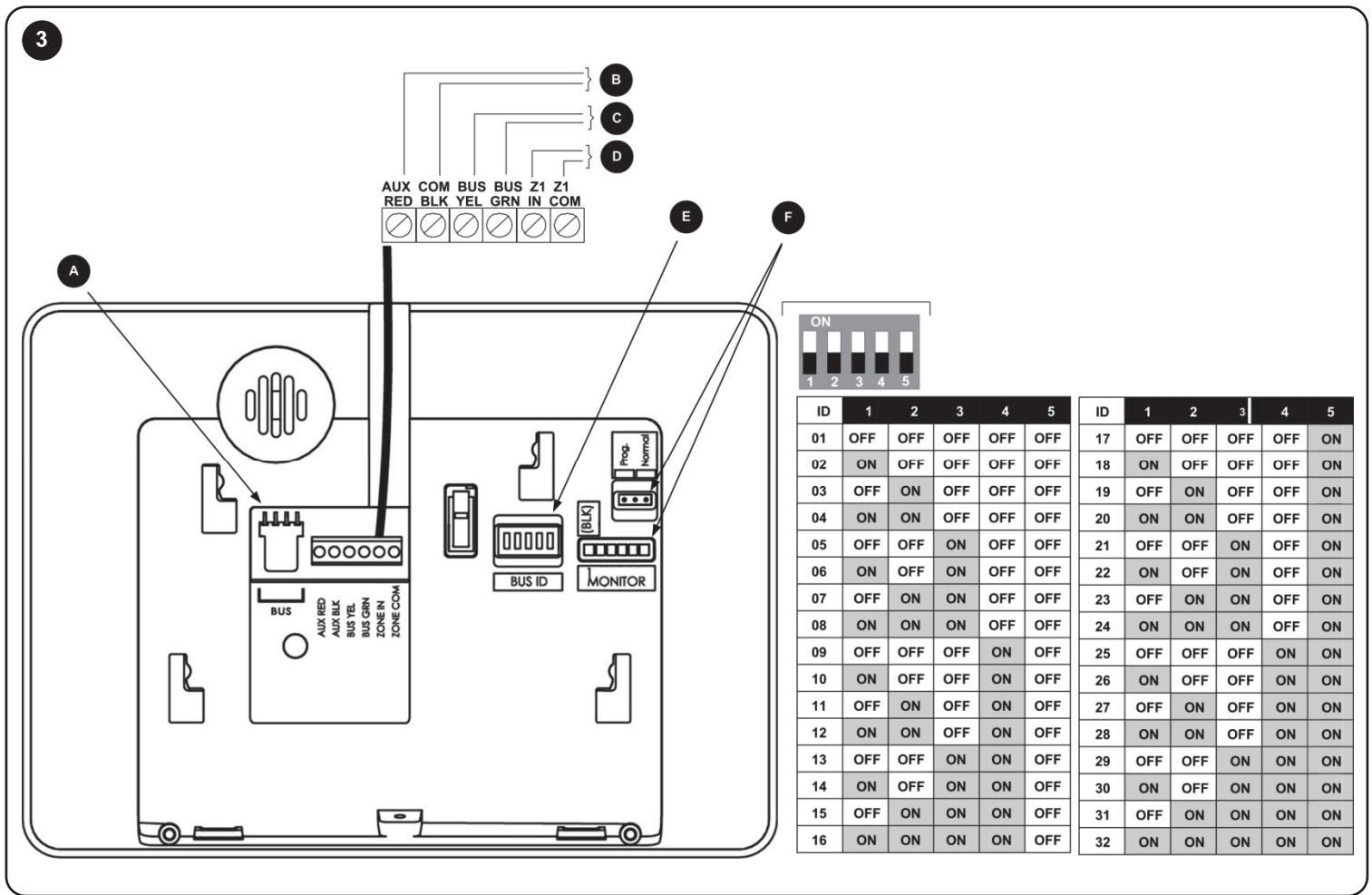
EN IT ES FR NL PL



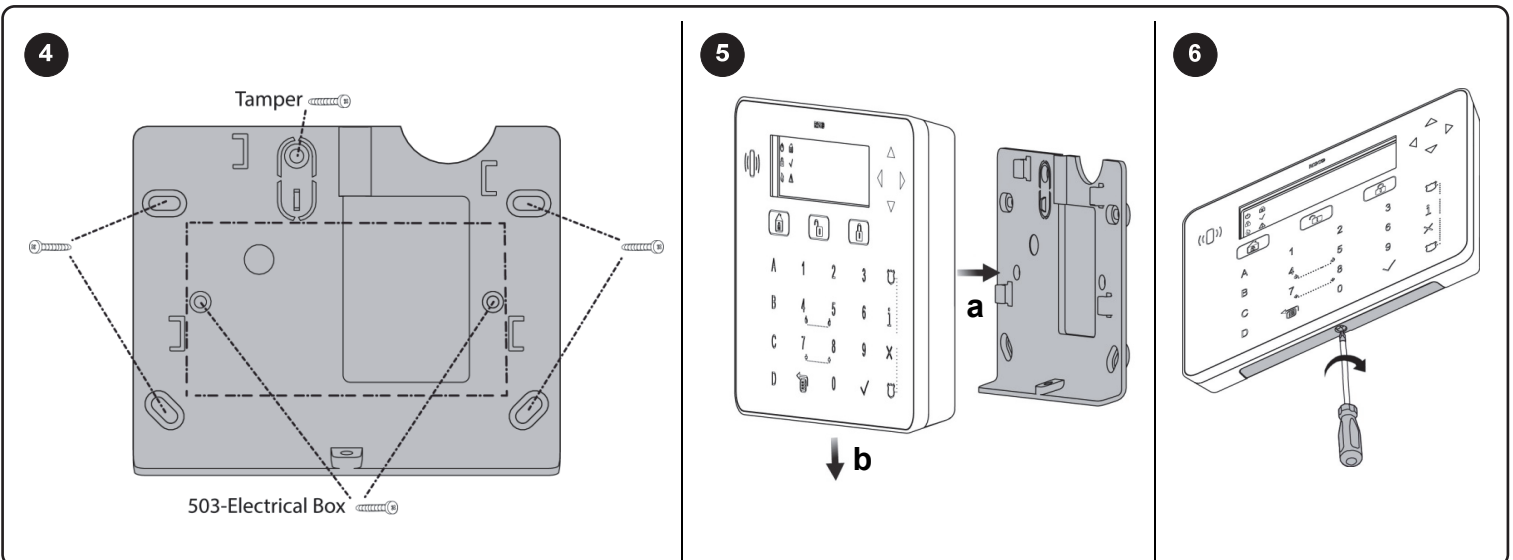
Installation Guide

| | |
|--|---|
| <p>EN</p> <p>Compatible with RISCO Group's wired and hybrid intrusion systems, the Elegant Keypad is a slim, sensitive and reliable keypad which is responsive to touch.</p> <p>For the Elegant Keypad User Guide, refer to our website at: http://www.riscogroup.com/support/downloads.</p> | <p>IT</p> <p>La tastiera Elegant è un sottile e stilizzato dispositivo di comando con una serie di tasti numerici e di funzione sensibili al tocco. La tastiera è compatibile con tutti i Sistemi antintrusione di RISCO, sia cablati che ibridi.</p> <p>Per la Guida Utente del prodotto fare riferimento alla documentazione presente nel nostro sito web http://www.riscogroup.com/italy/support/downloads.</p> |
| <p>ES</p> <p>Compatible con sistemas de intrusión cableados e híbridos de RISCO, el teclado Elegant es un teclado táctil, esbelto, sensible y fiable.</p> <p>Para obtener la Guía de usuario, visite nuestra web: http://www.riscogroup.com/support/downloads.</p> | <p>FR</p> <p>Compatible avec les systèmes d'intrusion filaires et hybrides de RISCO Group, le clavier 'Élégant' est un clavier tactile mince, sensible et fiable.</p> <p>Pour obtenir le Guide Utilisateur du clavier 'Élégant', reportez-vous à notre site Web: http://www.riscogroup.com/support/downloads.</p> |
| <p>NL</p> <p>Compatibel met RISCO Groups bedrade en hybride inbraaksystemen, is het Elegant keypad een slank, receptief en betrouwbaar keypad dat reageert via aanraking.</p> <p>Voor de Elegant Keypad gebruikershandleiding gelieve naar onze website te surfen: http://www.riscogroup.com/support/downloads.</p> | <p>PL</p> <p>Kompatybilna z przewodowymi i hybrydowymi centralami alarmowymi RISCO Group, Elegancka Klawiatura jest wąską, czułą i pewną w działaniu klawiaturą, reagującą na dotyk.</p> <p>Instrukcja Użytkownika klawiatury znajduje się na naszej stronie internetowej: http://www.riscogroup.com/support/downloads.</p> |





| | EN | IT | ES | FR | NL | PL |
|----------|---|--|--|---|---|--|
| A | Quick BUS Connector | Connettore BUS ad innesto | Conector rápido de BUS | Connecteur rapide BUS | Snelle BUS Connector | Konektor Magistrali |
| B | 12VDC | 12VDC | 12VCC | 12VDC | 12VDC | 12VDC |
| C | BUS | BUS | BUS | BUS | BUS | BUS |
| D | Additional Zone (supported only on specific versions) | Ingresso di zona aggiuntivo (supportato solo su versioni specifiche) | Zona adicional (Sólo se admite en versiones específicas) | Zone Additionnelle (pris en charge uniquement sur les versions spécifiques) | Additionele Zone (alleen ondersteund op specifieke versies) | Dodatkowa linia dozorowa (obsługiwana tylko w niektórych wersjach) |
| E | BUS Address | Indirizzo BUS | Dirección BUS | Adresse BUS | BUS Adres | Adres |
| F | Factory use only | Impostazioni di fabbrica solo | Sólo se utiliza en fábrica | Réservé au fabricant | Enige fabriek gebruiken | Używać tylko fabrycznie |





Technical Specifications

| Parameter | Description |
|---|--|
| Current Consumption: Elegant Keypad Elegant Keypad (Proximity) | 12V +/-15%, 100 mA max. 12V +/-15%, 150 mA max. |
| Main Panel Connection | 4-wire BUS, up to 300 m (1000 ft) from Main Panel |
| Dimensions | 177 mm x 129 mm x 24 mm (6.9" x 5.0" x 0.9") |
| Operating Temperature | -10°C to 50°C (14°F to 122°F) |
| Prox. RF Frequency | 13.56MHz |

Specifiche Tecniche

| Parametro | Descrizione |
|---|--|
| Assorbimento in corrente: Tastiera Elegant Tastiera Elegant (con prossimità) | 12V +/-15%, 100 mA max. 12V +/-15%, 150 mA max. |
| Connessione con la scheda di centrale | Via BUS a 4 fili ad una distanza di max 300 metri. |
| Dimensioni | 177 mm x 129 mm x 24 mm |
| Temperatura di funzionamento | Da -10°C a 50°C |
| Frequenza prossimità | 13.56 MHz |

Características técnicas

| Parámetros | Descripción |
|---|---|
| Consumo de corriente: Teclado Elegant Teclado Elegant (Proximidad) | 12V +/-15%, 100 mA máx. 12V +/-15%, 150 mA máx. |
| Conexión panel principal | 4-hilosBUS, hasta 300 m (1000 ft) desde Panel principal |
| Dimensiones | 177 mm x 129 mm x 24 mm (6.9" x 5.0" x 0.9") |
| Temperatura de funcionamiento | -10°C a 50°C (14°F a 122°F) |
| Frecuencia Prox. | 13.56MHz |

Spécifications Techniques

| Paramètres | Description |
|--|--|
| Consommation: Clavier Élégant Clavier Élégant (Proximité) | 12V +/-15%, 100 mA max. 12V +/-15%, 150 mA max. |
| Connexion centrale | BUS 4-fils, jusqu'à 300 m de la centrale |
| Dimensions | 177 mm x 129 mm x 24 mm |
| Température de fonctionnement | -10°C to 50°C |
| Fréquence Prox. RF | 13.56MHz |

Technische Specificaties

| Parameters | Beschrijving |
|--|--|
| Stroomverbruik: Elegant Keypad Elegant Keypad (Proximity) | 12V +/-15%, 100 mA max. 12V +/-15%, 150 mA max. |
| Hoofdpaneel Connectie | 4-wire BUS, up to 300 m (1000 ft) from Main Panel |
| Afmetingen | 177 mm x 129 mm x 24 mm (6.9" x 5.0" x 0.9") |
| Bedrijfstemperatuur | -10°C to 50°C (14°F to 122°F) |
| Prox. RF Frequentie | 13.56MHz |

Dane Techniczne

| Parametr | Opis |
|---|--|
| Pobór prądu: Wersja standardowa Wersja z czynnikiem zbliżeniowym | 12V +/-15%, 100 mA max. 12V +/-15%, 150 mA max. |
| Podłączenie do centrali | 4-żyłowa magistrala (BUS), do 300 m |
| Wymiary [mm] | 177 x 129 x 24 |
| Temperatura pracy | -10°C do 50°C |
| Częstotliwość Systemu zbliżeniowego | 13.56MHz |

Certification

EN50131-3 Grade 3 Environmental class II

FCC ID: JE4RPKELP

This device complies with part 15 of the FCC Rules. Operation is subject to the following two conditions:

- (1) This device may not cause harmful interference, and
- (2) This device must accept any interference received, including interference that may cause undesired operation.

Any Changes or modifications not expressly approved by the party responsible for compliance could void the user's authority to operate the equipment

FCC Note

This equipment has been tested and found to comply with the limits for a Class B digital device, pursuant to part 15 of the **FCC Rules**. These limits are designed to provide reasonable protection against harmful interference in a residential installation. This equipment generates uses and can radiate radio frequency energy and, if not installed and used in accordance with the instructions, may cause harmful interference to radio communications. However, there is no guarantee that interference will not occur in a particular installation. If this equipment does cause harmful interference to radio or television reception, which can be determined by turning the equipment on and off, the user is encouraged to try to correct the interference by one or more of the following measures:

- Reorient or relocate the receiving antenna.
- Increase the separation between the equipment and the receiver.
- Connect the equipment into an outlet on to a different circuit from that to which the receiver is connected.
- Consult the dealer or an experienced radio/TV technician for help.

Ordering Information

| P/N | Description |
|--------------|--------------------------------------|
| RPKELOB0000A | Elegant Keypad, Black |
| RPKELPB0000A | Elegant Keypad, Black with Proximity |
| RPKELOW0000A | Elegant Keypad |
| RPKELPW0000A | Elegant Keypad with Proximity |
| RP200KT | 10 Proximity Key tags (13.5MHz) |

RED Compliance Statement:

Hereby, RISCO Group declares that this equipment is in compliance with the essential requirements and other relevant provisions of Directive 2014/53/EU. For the CE Declaration of Conformity please refer to our website: www.riscogroup.com

Standard Limited Product Warranty

RISCO Ltd., its subsidiaries and affiliates ("Risco") guarantee Risco's hardware products to be free from defects in materials and workmanship when used and stored under normal conditions and in accordance with the instructions for use supplied by Risco, for a period of (i) 24 months from the date of connection to the Risco Cloud (for cloud connected products) or (ii) 24 months from production (for other products which are non-cloud connected), as the case may be (each, the "Product Warranty Period" respectively).

Contact with customers only. This Product Warranty is solely for the benefit of the customer who purchased the product directly from Risco, or from any authorized distributor of Risco. Nothing in this Warranty obligates Risco to accept product returns directly from end users that purchased the products for their own use from Risco's customer or from any installer of Risco, or otherwise provide warranty or other services to any such end user. Risco customer shall handle all interactions with its end users in connection with the Warranty, inter alia regarding the Warranty. Risco's customer shall make no warranties, representations, guarantees or statements to its customers or other third parties that suggest that Risco has any warranty or service obligation to, or any contractual privity with, any recipient of a product.

Return Material Authorization. In the event that a material defect in a product shall be discovered and reported during the Product Warranty Period, Risco shall, at its option, and at customer's expense, either: (i) accept return of the defective Product and repair or have repaired the defective Product, or (ii) accept return of the defective Product and provide a replacement product to the customer. The customer must obtain a Return Material Authorization ("RMA") number from Risco prior to returning any Product to Risco. The returned product must be accompanied with a detailed description of the defect discovered ("Defect Description") and must otherwise follow Risco's then-current RMA procedure in connection with any such return. If Risco determines in its reasonable discretion that any Product returned by customer conforms to the applicable warranty ("Non-Defective Products"), Risco will notify the customer of such determination and will return the applicable Product to customer at customer's expense. In addition, Risco may propose and assess customer a charge for testing and examination of Non-Defective Products.

Entire Liability. The repair or replacement of products in accordance with this warranty shall be Risco's entire liability and customer's sole and exclusive remedy in case a material defect in a product shall be discovered and reported as required herein. Risco's obligation and the Warranty are contingent upon the full payment by customer for such Product and upon a proven weekly testing and examination of the product functionality.

Limitations. The Product Warranty is the only warranty made by Risco with respect to the Products. The warranty is not transferable to any third party. To the maximum extent permitted by applicable law, the Product Warranty does not apply and will be void if: (i) the conditions set forth above are not met (including, but not limited to, full payment by customer for the product and a proven weekly testing and examination of the product functionality); (ii) if the Products or any part or component thereof: (a) have been subjected to improper operation or installation; (b) have been subject to neglect, abuse, willful damage, abnormal working conditions, failure to follow Risco's instructions (whether oral or in writing); (c) have been misused, altered, modified or repaired without Risco's written approval or combined with, or installed on products, or equipment of the customer or of any third party; (d) have been damaged by any factor beyond Risco's reasonable control such as, but not limited to, power failure, electric power surges, or unsuitable third party components and the interaction of software therewith or (e) any delay or other failure in performance of the product attributable to any means of communications, provided by any third party service provider (including, but not limited to) GSM interruptions, lack of or internet outage and/or telephony failure.

BATTERIES ARE EXPLICITLY EXCLUDED FROM THE WARRANTY AND RISCO SHALL NOT BE HELD RESPONSIBLE OR LIABLE IN RELATION THERETO, AND THE ONLY WARRANTY APPLICABLE THERETO, IF ANY, IS THE BATTERY MANUFACTURER'S WARRANTY.

Risco makes no other warranty, expressed or implied, and makes no warranty of merchantability or of fitness for any particular purpose. For the sake of good order and avoidance of any doubt: **DISCLAIMER.** EXCEPT FOR THE WARRANTIES SET FORTH HEREIN, RISCO AND ITS LICENSORS HEREBY DISCLAIM ALL EXPRESS, IMPLIED OR STATUTORY, REPRESENTATIONS, WARRANTIES, GUARANTEES, AND CONDITIONS WITH REGARD TO THE PRODUCTS, INCLUDING BUT NOT LIMITED TO ANY REPRESENTATIONS, WARRANTIES, GUARANTEES, AND CONDITIONS OF MERCHANTABILITY, FITNESS FOR A PARTICULAR PURPOSE, TITLE AND LOSS OF DATA. WITHOUT LIMITING THE GENERALITY OF THE FOREGOING, RISCO AND ITS LICENSORS DO NOT REPRESENT OR WARRANT THAT: (i) THE OPERATION OR USE OF THE PRODUCT WILL BE TIMELY, SECURE, UNINTERRUPTED OR ERROR-FREE; (ii) THAT ANY FILES, CONTENT OR INFORMATION OF ANY KIND THAT MAY BE ACCESSED THROUGH THE PRODUCT BY CUSTOMER OR END USER SHALL REMAIN SECURED OR NON DAMAGED. CUSTOMER ACKNOWLEDGES THAT NEITHER RISCO NOR ITS LICENSORS CONTROL THE TRANSFER OF DATA OVER COMMUNICATIONS FACILITIES, INCLUDING THE INTERNET, GSM OR OTHER MEANS OF COMMUNICATIONS AND THAT RISCO'S PRODUCTS, MAY BE SUBJECT TO LIMITATIONS, DELAYS, AND OTHER PROBLEMS INHERENT IN THE USE OF SUCH MEANS OF COMMUNICATIONS. RISCO IS NOT RESPONSIBLE FOR ANY DELAYS, DELIVERY FAILURES, OR OTHER DAMAGE RESULTING FROM SUCH PROBLEMS.

RISCO WARRANTS THAT ITS PRODUCTS DO NOT, TO THE BEST OF ITS KNOWLEDGE, INFRINGE UPON ANY PATENT, COPYRIGHT, TRADEMARK, TRADE SECRET OR OTHER INTELLECTUAL PROPERTY RIGHT

IN ANY EVENT RISCO SHALL NOT BE LIABLE FOR ANY AMOUNTS REPRESENTING LOST REVENUES OR PROFITS, PUNITIVE DAMAGES, OR FOR ANY OTHER INDIRECT, SPECIAL, INCIDENTAL, OR CONSEQUENTIAL DAMAGES, EVEN IF THEY WERE FORESEEABLE OR RISCO HAS BEEN INFORMED OF THEIR POTENTIAL.

Risco does not install or integrate the product in the end user security system and is therefore not responsible for and cannot guarantee the performance of the end user security system which uses the product.

Risco does not guarantee that the product will prevent any personal injury or property loss by burglary, robbery, fire or otherwise; or that the product will in all cases provide adequate warning or protection.

Customer understands that a correctly installed and maintained alarm may only reduce the risk of burglary, robbery or fire without warning, but is not an assurance or a guarantee that such an event will not occur or that there will be no personal injury or property loss as a result thereof. Consequently Risco shall have no liability for any personal injury, property damage or loss based on a claim that the product fails to give warning.

No employee or representative of Risco is authorized to change this warranty in any way or grant any other warranty.

Contacting RISCO Group

RISCO Group is committed to customer service and product support. You can contact us through our website (www.riscogroup.com) or at the following telephone and fax numbers:

United Kingdom

Tel: +44-(0)-161-655-5500
support-uk@riscogroup.com

Italy

Tel: +39-02-66590054
support-it@riscogroup.com

Spain

Tel: +34-91-490-2133
support-es@riscogroup.com

France

Tel: +33-164-73-28-50
support-fr@riscogroup.com

Belgium (Benelux)

Tel: +32-2522-7622
support-be@riscogroup.com

China (Shanghai)

Tel: +86-21-52-39-0066
support-cn@riscogroup.com

USA

Tel: +1-631-719-4400
support-usa@riscogroup.com

Israel

Tel: +972-3-963-7777
support@riscogroup.com



All rights reserved.

No part of this document may be reproduced in any form without prior written permission from the publisher.